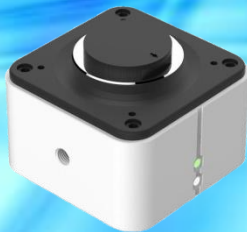


MI-Cam 6 USB 3.0 CMOS Digital Camera



Capture, Process, Measure, and Share image is Made Easy

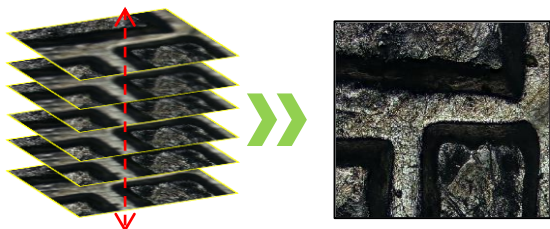


Let Your Microscope Field-of-view: Discover more & faster

- Sony professional 6 mega-pixels CMOS 1/1.8" sensor with rolling shutter and 2.4 um x 2.4 um pixel size
- USB 3.0 high speed transmission interface, sample and convenient while ensuring a high sensitivity and low noise for excellent low-light Imaging
- Full resolution 6 mega pixels with up to 40 fps, support 4 cameras simultaneously
- Excellent imaging performance for both bright-field and dark-field imaging needs

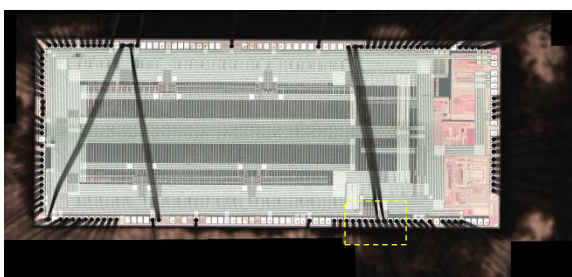
Live Extended Depth of Focus

Provide you real-time depth of field fusion function to capture beautifully focused images, regardless of depth, with **Live EDF**. It's help you to generate a clear depth of field image with fast, accurate and efficient. No automated Z motor required!



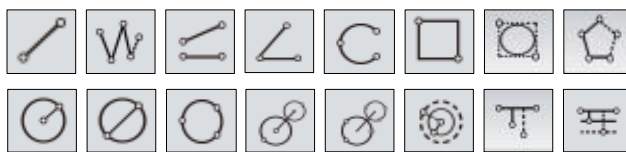
Live Tiling (Image Stitching)

Provide you real-time image stitching function to stitch together multiple fields of view as you manually move around your specimen with **Live Tiling**. It can generate large-sized mosaic images which is light, smooth and easy! No automated XY stage required!



Imaging Capture Software Feature Overview:

- Single frame, time laps & video acquisition
- Support single shot, delay video camera
- Live tiling & EDF
- Crosshair grid on live image display
- TWAIN acquisition (32-bit)
- Calibration & mark scale bar on image
- Customize measuring gauges, layers, precision
- Customize image naming, style, save location
- Dynamic & static measurement
- Layered measurement
- Implements drawing: points, lines, rectangles, polygons, circles, arcs, angles



- Annotation tools
- Manual tags
- Quick save image with output format selection
- Intelligent 12-bit ISP color reproduction
- Real-time fluorescence image synthesis and editing
- HDR image synthesis
- User parameter group save and load
- Export data to Excel or TXT file
- Report tools
- Support multi-language interface
Traditional / Simplified Chinese and English

MI-Cam 6 USB 3.0 CMOS Digital Camera

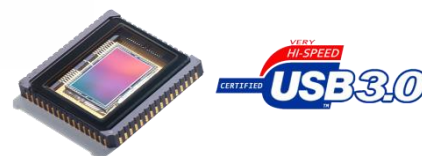


Capture, Process, Measure, and Share image is Made Easy

6 Mega-Pixels Color Imaging Solution for Documentation & Publication

Support Powerful Live EDF (Extended Depth of Focus) & Live Tiling Function

MI-Cam 6 Specifications



Sony Exmor R / STARVIS Sensor Technology Inside

Image Sensor

Sensor Type	Sony IMX178 CMOS Color Sensor
Pixel Array	3072 x 2048, 6 mega pixels
Pixel Size	2.4 μm x 2.4 μm
Dimensions	Diagonal 8.92 mm, Type 1/1.8"

Camera

Digital Output	12-bit
Frame Rate	40 fps @ 6 mega pixels Color
Shutter Mode	Rolling
Exposure Time	0.13ms ~ 15s

Interfacing

Operating System	Windows 7 / 8 / 10 (64-bit)
Digital Interface	USB 3.0

Mechanical

Optical Interface	C-Mount optical format
Mounting Thread	1/4" - 20 thread, 4 sides
Camera Dimensions	68mm x 68mm x 46mm
Operating Temperature	0°C ~ 60°C
Weight	330 g

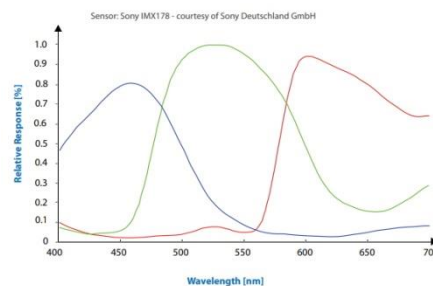
Included :

- MI-Cam 6 USB3.0 CMOS Camera
- 1.8M USB 3.0 Cable
- Imaging Capture v2.0 Software
 - Manual Measurement
 - Live EDF
 - Live Tiling
- One Year Limited Warranty

System Requirements :

- Windows[®] 7 / 8 / 10 64-bit
- CPU Intel Core i5 or better (Quad or more)
- RAM 8 GB or more
- 20GB of available hard disk space
- USB 3.0 port required for driving camera and power supply

Spectral Sensitivity :



Rm7, 10FL, No.262, Sec. 2, Henan Rd., Situn District, Taichung City 407, Taiwan (R.O.C.)

TEL: +886-4-27080265 FAX: +886-4-27080263

www.totalsmart.tw | service@totalsmart.com.tw

Authorized Dealer: